

FACSIMILE TRANSMITTAL SHEET

TO:	FROM:
Dr Refik Bismila	John Spiropoulos
COMPANY:	DATE:
Health Dept – Johannesburg Metro	9/13/01
FAX NUMBER:	TOTAL NO. OF PAGES INCLUDING COVER:
4031631	1
PHONE NUMBER:	RE:
4077513	Faraday Station Informal Market

URGENT FOR REVIEW PLEASE COMMENT PLEASE REPLY PLEASE RECYCLE

Dear Dr Bismila,

With reference to our telephone conversation on Tuesday this week this is to request your assistance regarding the Faraday station informal market in traditional herbal medicines.

Special Places cc is managing a technical team contracted by the Johannesburg Development Agency (JDA), a Johannesburg Metro Council agency currently focused on redevelopment of the Johannesburg inner city. We have been contracted to design facilities in the Faraday Station precinct that will primarily improve conditions for taxi and other public transport commuters. The work is required to take into consideration the activities and needs of stakeholders already in the area and to improve the local economy.

One group of people that have an interest in the development is those trading informally in traditional herbal medicines (the 'muti' traders). There are over 240 people occupied in these activities in the area under the M2 east bridge, including 52 traditional healers, i.e. sangomas and inyangas. A needs survey and our discussions with this group have concluded that we need to provide the following facilities:

1. Trading space,
2. A visitors and information centre, and admin space,
3. Consulting rooms and associated spaces, and
4. Residential accommodation.

This would be provided in one two-story building running east/west along Wemmer-Jubilee roads.

The reason we are consulting with you about this project is to determine any policy, health or environmental health regulations that will impact on the building design and



operation, and the recommendation we make to our client in this regard. We would like to meet with appropriate people from your department to do a short presentation of what is planned and to obtain comments as outlined above.

Thanks you for your cooperation.

Yours Sincerely

pp *John Spiropoulos*

John Spiropoulos

SPECIAL PLACES



Note: Correspondence with Department of Agriculture, Conservation, Environment & Land Affairs

12th October 2001

Attention Lourens Badenhorst
Head of Department – Nature Conservation

Fax (011) 337 2292

Request for comments on proposed Faraday redevelopment project – Muti market

Special Places cc is managing a project team contracted by the Johannesburg Development Agency (JDA), a Johannesburg Metro Council agency currently focussed on redevelopment of the Johannesburg inner city. We have been contracted to design facilities and services in the Faraday Station precinct that will improve conditions primarily for taxi and other public transport commuters. The work is required to take into consideration the activities and needs of stakeholders already in the area and to improve the local economy.

One group of people that have an interest in the development is those trading informally in traditional herbal medicines (the 'muti' traders). There are over 240 people occupied in these activities in the area under the M2 east bridge, including 52 traditional healers, i.e. sangomas and inyangas. A needs survey and our discussions with this group have concluded that we should recommend to provide the following facilities:

1. Trading spaces, (some of which in future are to be convertible to workshop spaces)
2. Rooms wherein the healers can administer treatment/ritual and associated spaces procedures,
3. Residential accommodation,
4. A visitors and information centre and, if possible establishment of -
5. An environmental centre that can be used to provide training and support, and to monitor and administer regulation and inspection of the traditional medicine and supply chain.

We would like to ensure that the project adheres to existing policy and regulation and therefore would request your department's formal response to the initiative. We have been consulting with your department through Dr Sue Taylor. We would also like your comments on the proposal to establish an environmental centre ((5) above). Is this something that you could support and if so with what conditions.

Yours Sincerely

John Spiropoulos

APPENDIX 3

LETTER OF INTRODUCTION



Interfaith Community Development Association

■ 3rd FLOOR TITACO HOUSE 63 JUTA CNR BERTHA STREET BRAAMFONTEIN 2001 SOUTH AFRICA

■ P O BOX 31389 BRAAMFONTEIN 2017 RSA

■ TELEPHONE: (011) 339-3474 ■ FAX: (011) 339-2738

Reg. No. 91/06186/08

TO WHOM IT MAY CONCERN

This letter is to introduce to you the interviewing team who will make themselves known to businesses and organisations in the Faraday area.

The objective of this programme is to enter into discussions with relevant stakeholders and interested parties as to how an improved taxi facility in this area can contribute to the well-being and flourishing of the area.

The partners in the programme are the Johannesburg Inner City, Interfaith Community Development Association (ICDA) and de Leeuw, Cather, consulting engineers.

If you require further information please contact –

Cavell Chiloane	403-3731; cell 082-878-5147
William Smith	339-3474
Todd Lethata	339-3474
Josie Adler	339-3474; cell 083-695-5227

We appreciate your giving time to our interviewers, which we trust will be productive and useful.

Yours sincerely

ISHMAEL MKHABELA
EXECUTIVE DIRECTOR

APPENDIX 4

**INCOME AND EXPENDITURE PROFILE OF TRADITIONAL MEDICINE
TRADERS AND HEALERS
AND
SUMMARY OF STREET TRADER NEEDS SURVEY**

Income Range

Generalisations:

- Traders with lockers cite earnings more than non-locker traders
- Traditional healers earn more than non-traditional healers; the income of traditional healers is spread out over several income categories, especially for traders with lockers
- Traditional healers are also most likely to have people helping them (See table 4).
Traditional healers that could afford assistants mostly earned more than R300/week
- Most of the non-locker traders are not traditional healers.
- While there is a tendency of the TH to earn more than the non-TH, this is more pronounced with traders without access to lockers. Non-locker traders earn less, even the traditional healers.
- It seems that access to storage facilities makes a difference in the income potential of the traders.

Table 1

Weekly income	Locker Traders		Non-Locker Traders		Total
	TH	Non-TH	TH	Non-TH	
>R100	9	14	11	20	54
R101-R200	3	5	4	14	26
R201-R300	4	-	2	-	6
R301-R400	-	-	1	1	2
R401-R500	2	2	1	-	5
R501-R600	2	-	-	-	2
+R601	1	-	-	-	1
Total	21	21	19	35	96

Table 2

Weekly income	Traditional healers	Non-traditional healers
>R100	20	34
R101-R200	7	19
R201-R300	6	-
R301-R400	1	1
R401-R500	3	2
R501-R600	2	-
+R601	1	-
Total	40	56

Table 3

Weekly income	Locker traders	Traders without lockers
>R100	23	31
R101-R200	8	18
R201-R300	4	2
R301-R400	-	2
R401-R500	4	1
R501-R600	2	-
+R601	1	-
Total	42	54

Table 4

	Locker Traders		Non-Locker Traders		Total
	TH	Non-TH	TH	Non-TH	
No assistant	13	14	17	23	67
1 assistant	6	1	1	6	14
2 assistants	1	2	1	-	5
3 assistants	-	1	-	-	1
+3 assistants	1	-	-	-	1
No answer	-	3	-	6	9
Total	21	21	19	35	96

Monthly Expenses

- A: Travel
- B: Accommodation
- C: Food
- D: Assistance

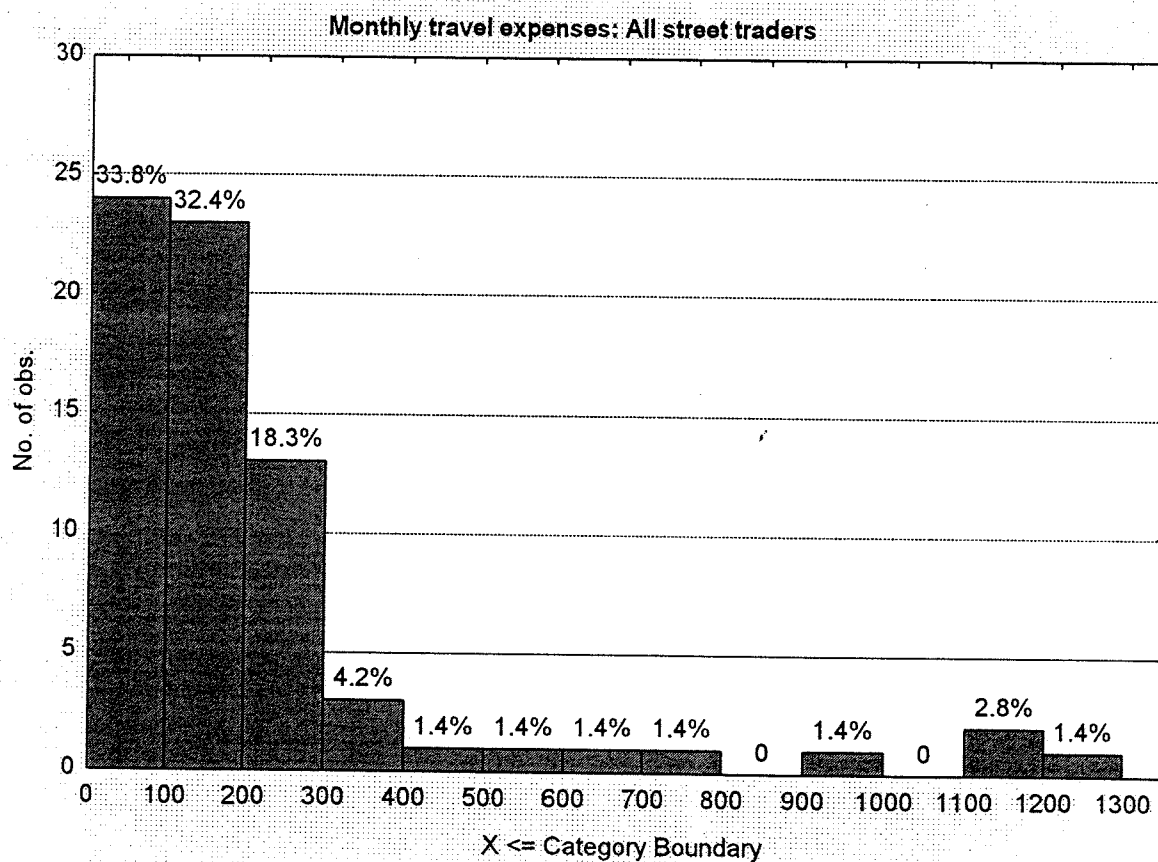
A: Monthly Travel Expenses:

Summary:

	All Street Traders (Graph A1)	Traditional Healers (Graph A2)	Non-traditional healers (Graph A3)
N	71	33	38
Mean	R242.82	R283.41	R204.70
Median	R160.00	R160.00	R153.60

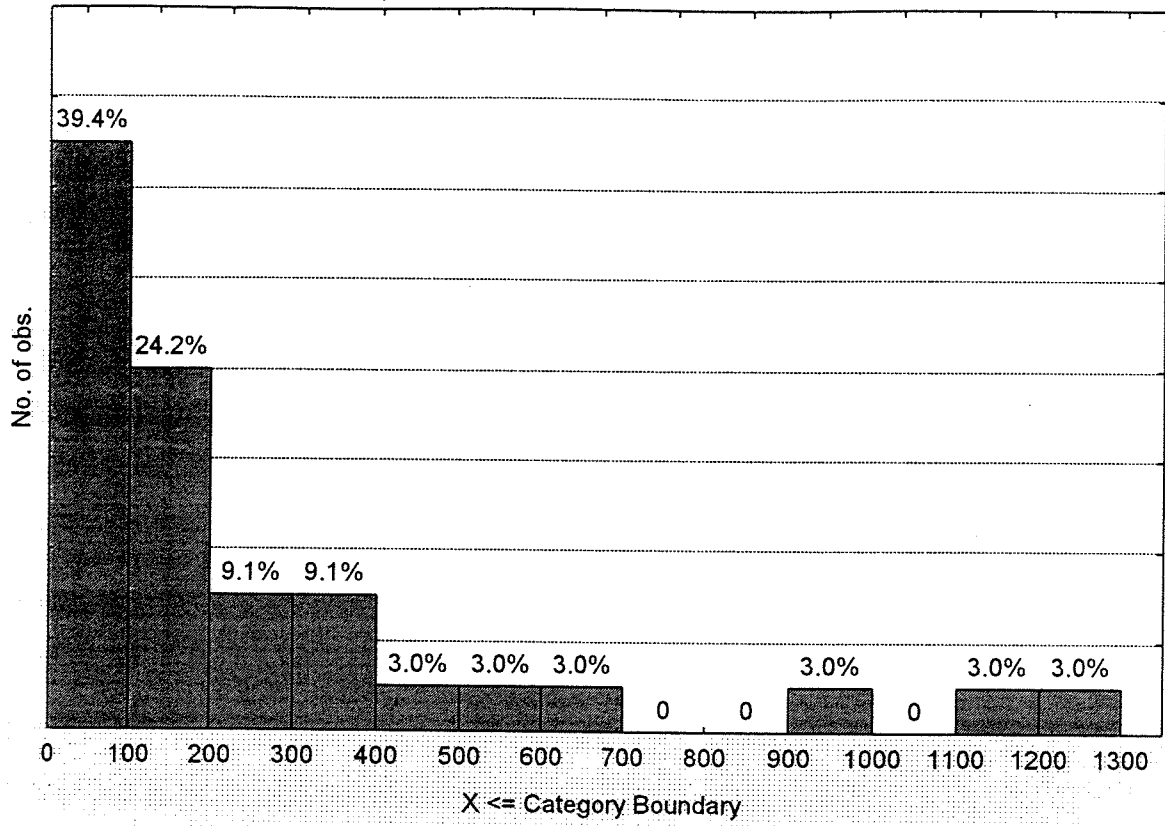
In general, the traditional healers monthly travel expenses are more, and the range is greater. This is likely to be so, in part, because traditional healers are more inclined to harvest some of the plants they sell compared to the non traditional healers – hence the cost of travel is higher.

Graph A1



Graph A2:

Monthly travel expenses: Traditional Healers



Graph A3:

Monthly travel expenses: Non-traditional healers

